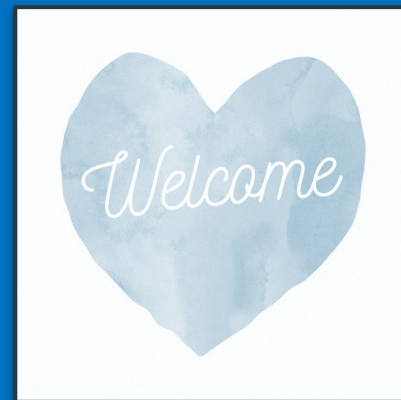


# WASHINGTON IRVING MIDDLE SCHOOL



# What, Why, & How

## Today I will...

...experience Irving Middle School in-action on a student-lead tour and learn about all of the elective options, learn my way around the school and get a feel for what middle school is like.

## So that I can...

...make more informed class selection requests after experiencing Irving classrooms and hallways.

## I will know I have it when...

I can explain what courses I want to request and know my way around the school.



# TIME TO TAKE THE TOURS!!!

Do these three things while on the tour:



- 1.) Ask your tour guides questions. That is what they are there for.
- 2.) Listen to the class descriptions and try to imagine yourself in the class.
- 3.) TAKE NOTES so that you can prepare to select your classes and rank the electives in your preferred order. (See next slide for note sheet).

# How to Fill out the Student Note Sheets

Please use the student note sheet to write down one thing you are excited about and one thing you want to learn more about in middle school

Then continue to use this sheet to write your notes for every elective class


See Example on the right —You will see the elective class name on the left followed by Yearlong or Semester. After you hear about the elective class you can mark an X on one of the following columns:

- Not for me X
- Maybe might consider X
- Definitely I want this X


Use the notes section column to write down little notes for yourself to remember each elective and then share with your parents why you when you are making your selections

Name: \_\_\_\_\_

During the presentation you can take notes and write down ideas to help you discuss your classes with your parents and complete the course selection sheet later..



Write one thing you are excited for in Middle School.



Write one thing you want to know more about in middle school.

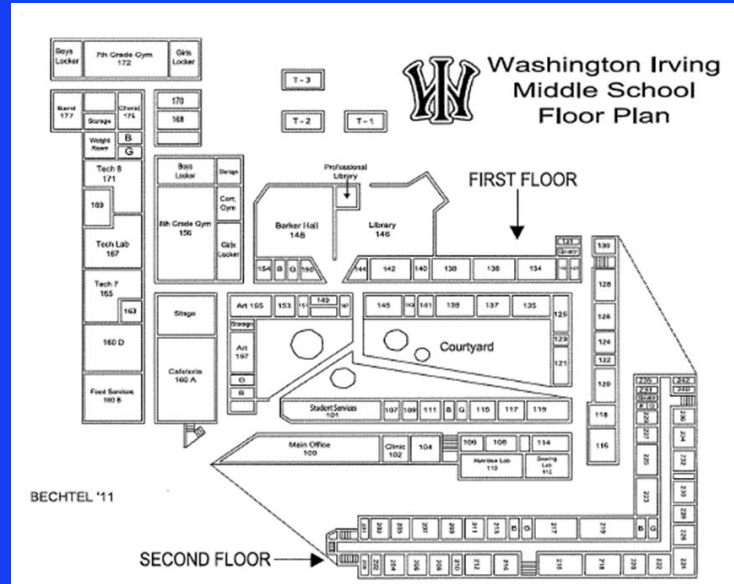
**Elective Options**

Option 1: Choose 2 Yearlong Electives (YR)  
 Option 2: Choose 1 Yearlong & 2 Semester Electives (S)  
 Option 3: Choose 4 Semester Electives

\*\*\*Yearlong: You will have this elective all year  
 \*\*\*Semester: You will have an elective for half the school year and a different elective for the other half

	YearLong OR Semester	Not for me	Maybe	Definitely	Notes/ Questions
<i>EXAMPLE</i>	<i>yearlong</i>	<i>X</i>			<i>This is just to show you how to fill out this document :)</i>
Coding 1 & 2 Computer Solutions	Semester				

# Welcome Back from your Irving Tours!



# Administration Team 2023-24

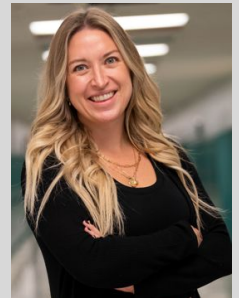
- Mrs. Conley – Principal



- Mrs. Gollinger – Director of Student Services



- Mrs. Cincinnati – Assistant Principal (8<sup>th</sup> Grade)



- Mr. Spear – Assistant Principal (7<sup>th</sup> Grade)



# School Counselors 2023-24

## Grade 7

- Ms. Nelson
- Ms. Kiefaber



## Grade 8

- Ms. Pareja
- Mr. Frenck



# After School Activities

- After School Activities (Clubs)
- Mon, Tue & Thu –
- 1<sup>st</sup> Block - 2:25-3:25 (Organized Clubs)
- 2<sup>nd</sup> Block – 3:35-4:35 (Large Site Activities)
- Activity Buses Depart – 4:45 (approx.)
- Homework Club (M-F)
- Students Create Clubs!



After School Specialist

Ms. Duncan





# See what you know about Irving



What are the four core classes?

English, Science, Social Studies & Math

What class does everyone have in common?

Health & PE

What electives does Irving offer?

Quite a few...more on that in a bit!

# **Semester (Half-year) Electives**

\*Prerequisite required

- Theatre Arts Appreciation
- Theatre Tech
- Musical Theatre
- Coding & Innovative Technology 1
- Coding & Innovative Technology 2\*
- Computer Solutions
- STEM Solutions
- Engineering Design & Modeling 1
- Engineering Design & Modeling 2 \*
- Strategies for Success
- Creative Writing
- Intro to Journalism
- Intro to Foreign Language
- Art Foundations (must be 1<sup>st</sup> art class)
- 3D Art Exploration\*
- Art Extensions\*
- Computers in Art\*
- Family & Consumer Science 1
- Tenor/Bass or Soprano/Alto Chorus
- Yoga

# Year-Long Electives

Band

What Questions do you Have?

Orchestra

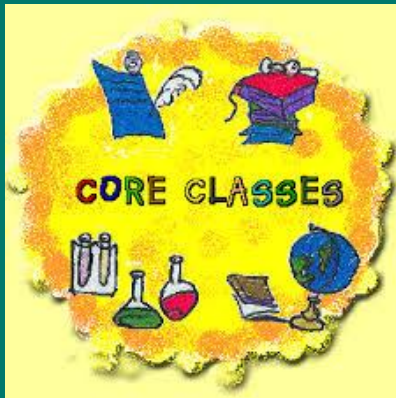
Chorus

German Immersion I\*

Strategies for Success

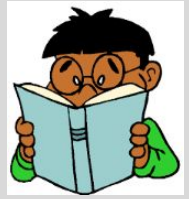


*Let's talk about the  
core classes now.*



# ENGLISH

English 7 or English 7 Honors



# SCIENCE

Investigations in Environmental Science 7  
Investigations in Environmental Science 7 Honors



# SOCIAL STUDIES

U. S. History 7  
U. S. History 7 Honors



# MATHEMATICS

Math 7, Math 7 Honors or Algebra 1 Honors



**SEE NEXT SLIDE FOR MORE INFO**

# Math 7 Sequence

## Math 7

Math 6 → Math 7

curriculum covers preparatory algebra and geometry concepts & skills

## Math 7 HN

Adv Math 6 → Math 7 HN

curriculum covers **8<sup>th</sup> grade math** with extensions and enrichment along with preparatory algebra and geometry concepts & skills

## Algebra 1 HN

- Adv. Math 6 program
- 91<sup>st</sup> percentile on IOWA test
- Math 7 SOL pass advance
- Students will be placed into this class after SOL's



# **Standard vs. Honors**

(English, Science & Social Studies)

## **On-Level Classes**

**Virginia standards of learning & FCPS programs of studies. (Content & Curriculum)**

- Support from teacher built into class time.
- Teaches self advocacy skills and student skills such as study habits, time management & organization.

## **Honors Classes**

**Virginia standards of learning & FCPS programs of studies. (Content & Curriculum)**

- Faster pace and more independent work
- Includes more writing and critical thinking
- Students are expected to have self-advocacy skills and study skills such as study habits, time management & organization

# Sample STUDENT Schedule

- 1.) Elective
- 2.) Health & PE
- 3.) Advisory/RockBlock
- 4.) English
- 5.) Math
- 6.) Elective
- 7.) History
- 8.) Science
- \*9.) Not a class just your team color & assigned school counselor

Schedule Information						
Per	Term	Section ID	Course	Meet Days	Teacher	Room
First Quarter						
1	S1	570032-11	570032 - Intro Foreign Lang	A O	Tan, K.	205
2	S1	712033-02	712033 - Health & PE 7	A E	Mazza, J.	Gym7
3	YR	111103-13	111103 - Advisory 3	A O	Higginbotham, M.	232
4	YR	111000-31	111000 - English 7	A E	Leishman, L.	207
5	YR	311100-14	311100 - Mathematics 7	A O	Cowgill, J.	234
6	S1	826332-14	826332 - FACS 1	A E	Sozzi, S.	112
7	YR	235500-32	235500 - US History 7	A O	Patchan, J.	214
8	YR	411500-37	411500 - Invest in Env Sci	A E	Nagle, A.	228
9	YR	993700-03	993700 - Team Desig 7th Gr	A O E	Yellow-Frenck, S.	

# IRVING MS BELL SCHEDULE

-School Starts at 7:25 am & ends at 2:15pm

-Blue Day= Odd classes

(1, 3, 5 & 7)

-White Day=Even classes

(2, 4 6, & 8)

-Each period is 85 minutes long & you have 4 minutes between each period to get from class to class

Irving MS Bell Schedule 2022-2023 School Year			
Time	Blue Day	White Day	Duration
7:30 - 8:55	1st Period	2nd Period	85 Minutes
8:59 - 10:24	3rd Period 8:59-9:44 - Rock Block 9:45-10:24 - Advisory	4th Period	I 85 Minutes
10:28 - 12:46	5th Period	6th Period	87 Minutes Class 30 Minutes Lunch 15 minutes Break
	10:28 - 10:58 (30) 11:00-11:15 (15) 11:19-12:46 (87)	A-Lunch Break Class	
	10:28-11:03 (35) 11:03 - 11:33 (30) 11:35 - 11:50 (15) 11:54 - 12:46 (52)	Class B-Lunch Break Class	
	10:28-11:15 (47) 11:17-11:32 (15) 11:34-12:04 (30) 12:06-12:46 (40)	Class Break C-Lunch Class	
	10:28-10:43 (15) 10:47-12:14 (87) 12:16-12:46 (30)	Break Class D-Lunch	
12:50 - 2:15	7th Period	8th Period	85 Minutes



# More Questions?

Check out the Course Catalog on Irving Website

## Irving Website

- Full Menu
  - Student Services
    - Academic Advising
      - 7<sup>th</sup> grade Course Catalog

**7TH GRADE COURSE CATALOG**

[View our 7th Grade Course Catalog](#)

Irving Middle School



Check out the course descriptions and elective videos!